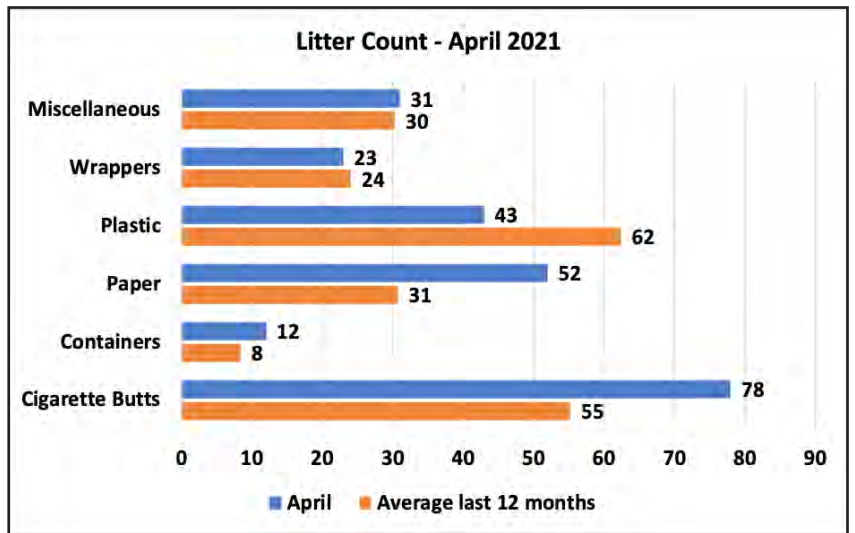




“The Twins”

**Stoney Creek Trail Report
No. 25 - April 2021**

First, the statistics from the Litter War: there were not so many of those white plastic scraps usually scattered near the poop bag dispensers; there was a surprising increase in the number of dropped tissues; and smokers, who always drop their butts, seem to be coming “out for a breath of fresh air” on the Trail more often.



Miscellaneous: clothing, glass, chewing gum, balls & fragments, etc.
Wrappers: candy wrappers, foil, cellophane
Plastic: doggy poo bags & scraps, plastic bags
Paper: tissues, napkins, receipts, newspaper, cardboard, etc.
Containers: bottles, coffee cups, cans, juice boxes, bottle tops

Spring has finally arrived! Below, the Wild Wonder pre-school group is lined up on the freshly mown grass in the Bowl enjoying the mid-month stretch of wonderful weather. The other photo is related to an annual ARPSES event that was curtailed due to the Pandemic. See the details of the operation on page eight.

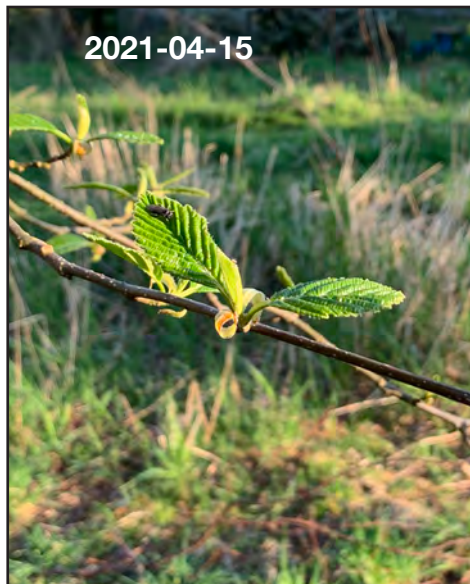
(You will notice that I have given names to various places along the trail. See page 11).



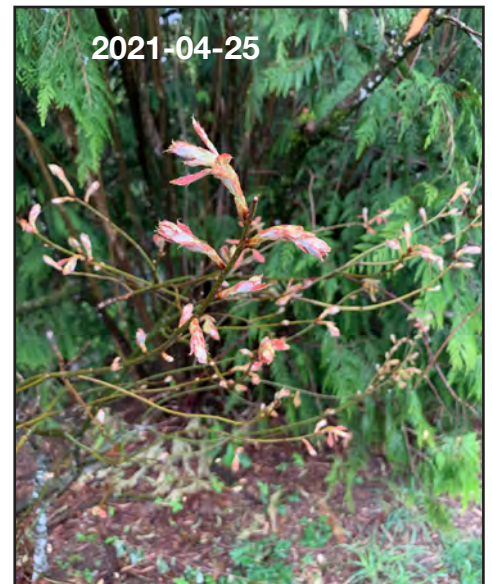
New growth on trees and shrubs:



2021-04-07



2021-04-15



2021-04-25



2021-04-24



2021-04-24

Top: **Red elderberry**, **Red alder**, and **Red oak** leaves.

Centre: **Bigleaf maple** and **Vine maple** flowers and leaves.

Bottom: **Pacific willow** catkins, **Red elderberry** flowers and **Pacific ninebark**, a large shrub which sheds its brown bark in strips. It will be in full bloom next month.



2021-04-24

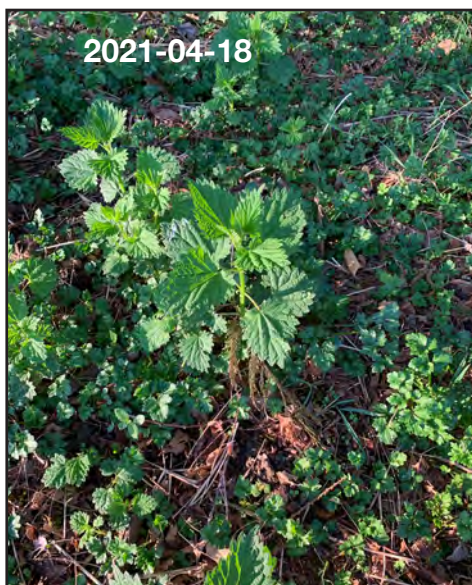
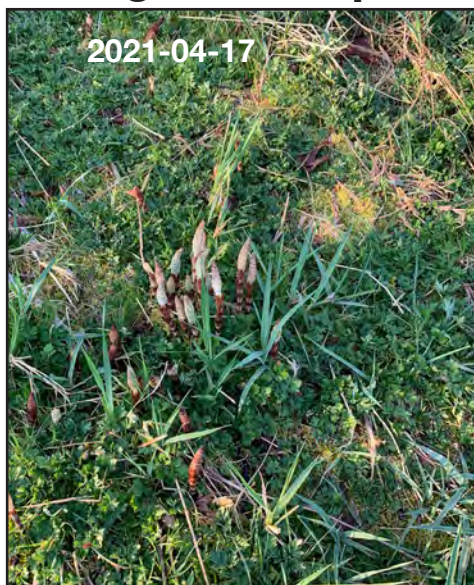


2021-04-24



2021-04-18

New growth in plants and flowers:



Top: **Horsetails**, very primitive plants that reproduce by spores rather than seeds; **Stinging nettles** which have been a source of food, herbal medicines and fiber; and **Wood bittercress**, which can add a peppery flavour to salads.

Take a walk south past The Forks and up Hemlock Hill to see the following plants growing in profusion:

Centre: Two invasive plants: the **Yellow archangel** and the **Common periwinkle**.

Bottom: the **Pacific bleeding heart**, and the endangered **Pacific waterleaf**.

While up there, keep an eye out for another endangered species, the rich brown **Oregon Forestsnail**.

A sample of the many unusual items found since the last report:



A frequently lost item, a dog tag; a child's jacket, a good one, hinting of an angry mother somewhere (it was eventually claimed); a plastic headset; another often-lost item, a glove; an abandoned toy; a dead rabbit (a necessary part of its life cycle); and a couple of plastic "thingies."



Dogs on the Trail:



Bruce is a lively one-year-old Doberman Pinscher. A lively, early morning regular, he bounds up and down the Trail checking out everything that moves. Fortunately, he is much more relaxed when on a leash.

Skye is a gentle four-year-old Fox Red English-type Labrador Retriever. Typical of a Lab, she treats everyone as her friend. Skye looks small in stature but actually weighs a solid 60 pounds. She loves to lie down and have her belly rubbed.

Cash, an American Staffy (Staffordshire Terrier), can also be seen on the Trail early in the morning. He is good natured, but very shy. In spite of his powerful build, he hasn't got an aggressive bone in his body.



More dogs:



Morley is a petite five-year-old Golden Doodle who came from a breeder in Langley. He is a very sweet dog who loves making new friends at the Stoney Creek Trail, where he walks with his owners, Cathy & Daryl, every day.

Parker is a 12-year-old pure bred Shih Tzu. He loves going for walks and looking out the window. He loves his big dog bed and getting human treats the odd time. He is still adjusting to losing his brother, Mattie, almost two years ago.

Caly (Calypso) is a four-year-old rescue that appears to be a shepherd-husky mix. She likes people more than dogs — especially if she knows they have treats. She loves her early morning walks on the Trail (and afternoon and evening, if she can).



The annual ARPSES fish release: (Abbotsford Ravine Park Salmon Enhancement Society)



Mid-month, on a warm, sunny afternoon, ARPSES volunteers released 15 thousand four-month-old coho salmon fry into Stoney Creek. The fry, born and raised in their Ravine Park Hatchery, were trucked in a holding tank to the pond at the north end of the Trail.



Above, DFO Community Advisor, **Tyler Thibault** gives the thumbs-up while **Dave Perritt** stands ready with a camera. **Dale Taylor** then opens the valve and student volunteer, **Bruce**, guides the stream of water and fish into the pond. Look carefully and you can see some of the little guys leaping as they hit the open water.

Finally, Bruce carefully flushes out the few remaining fish. The fry will find plenty of food in the pond, so some will remain there. Others will make their way upstream or downstream, wherever they can find food.



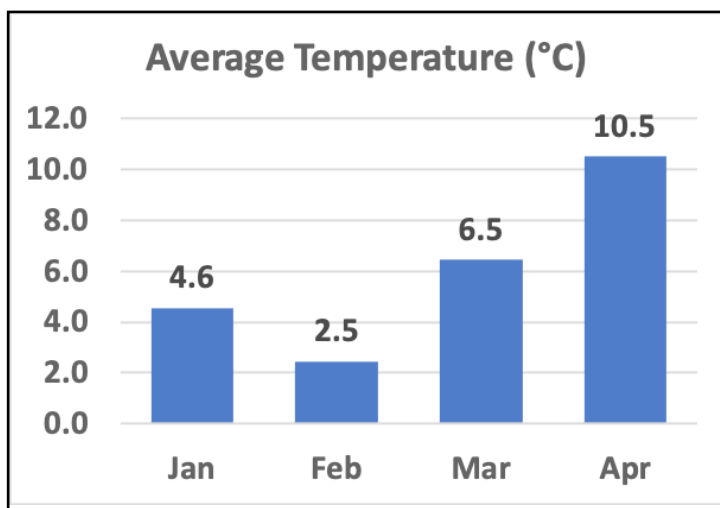
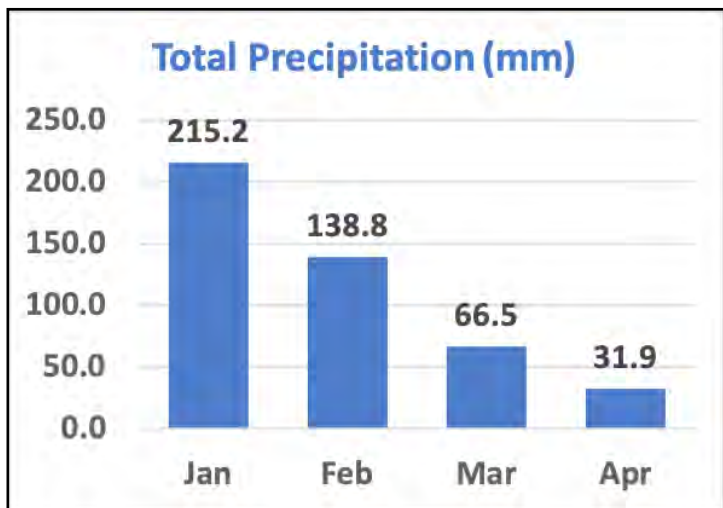
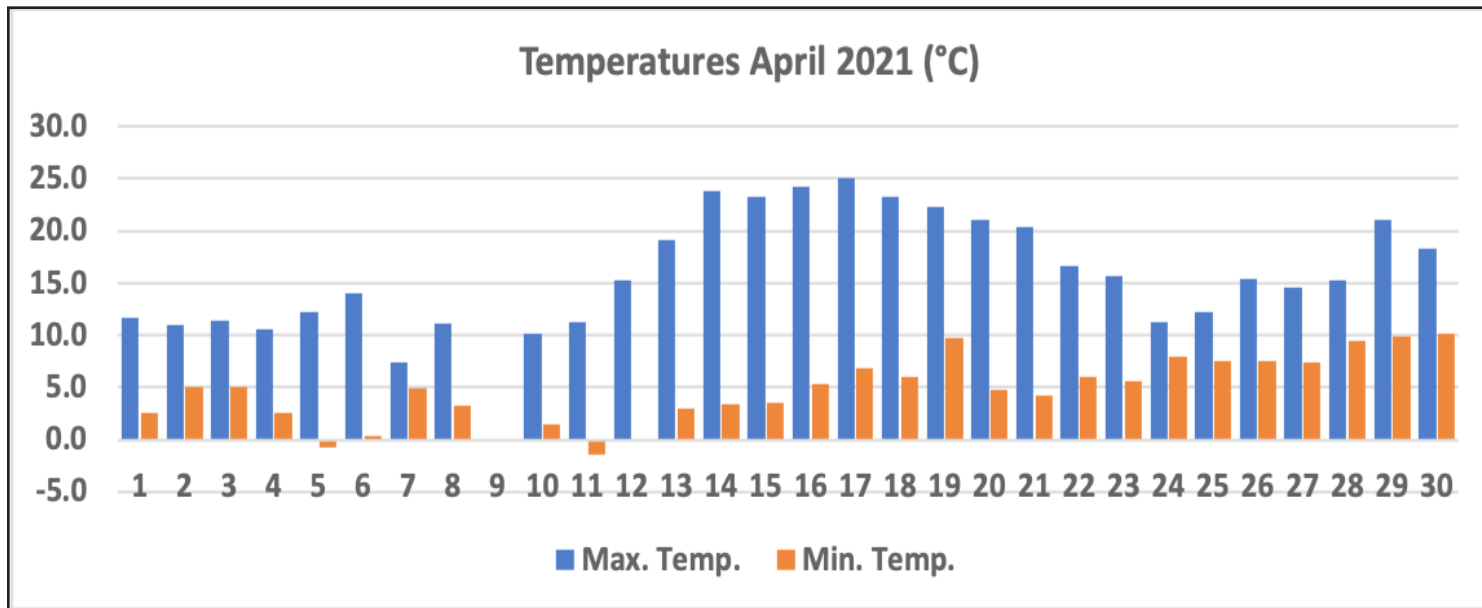
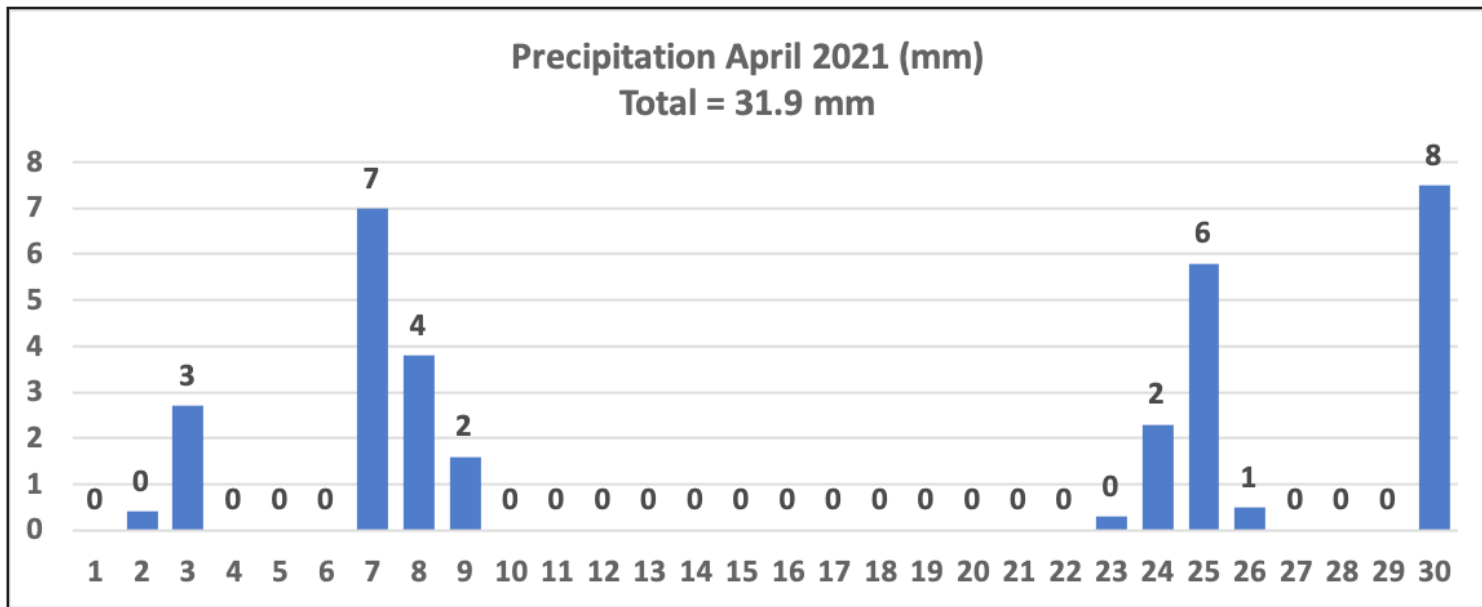
Is another Pebble Festival underway?

Last April, at the beginning of the Pandemic, decorated pebbles began appearing along the Trail. Some of them were dedicated to the heroic efforts of healthcare workers. Others, we have since learned, labeled with “#Abbyrocks” on the back, were placed by members of a recreational rock-hunting group of the same name. I called it the “Painted Pebble Festival” and published an album of photos. (If you would like to receive a PDF copy of that album, let me know by e-mail).

Below is a selection of the more than 40 pebbles which have appeared along the Trail since then.



Weather data from YXX: In spite of a having a rainy final week, April was a very dry month. Precipitation was half that of April 2020, but with the same average temperature.



For convenience, I use these customized place-names:



Dave Rutherford, Trail volunteer
dave_rutherford@telus.net